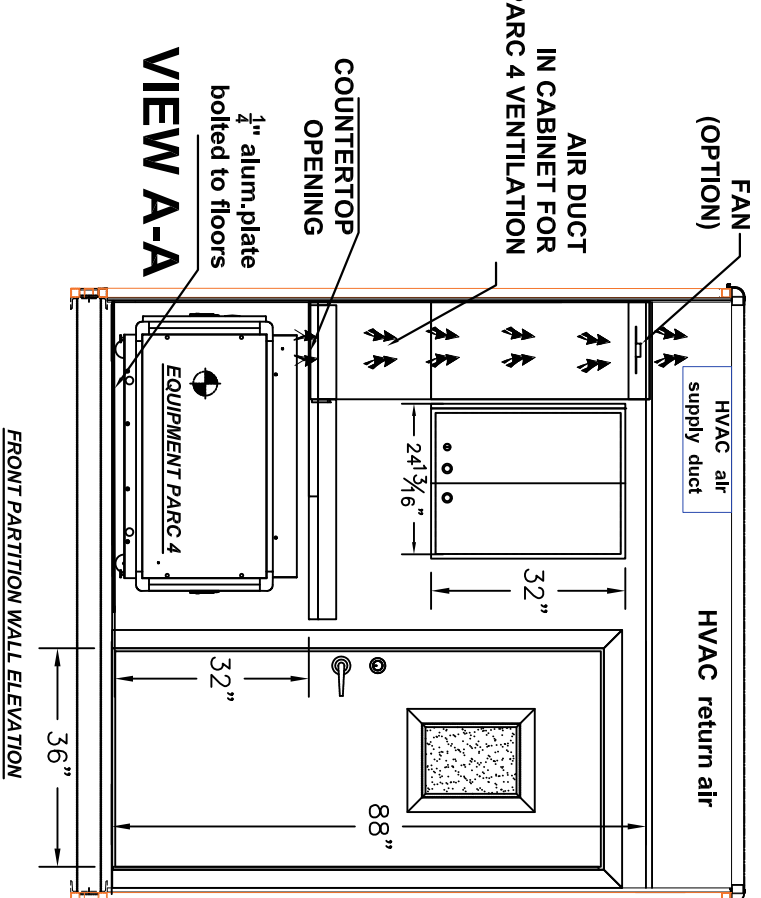
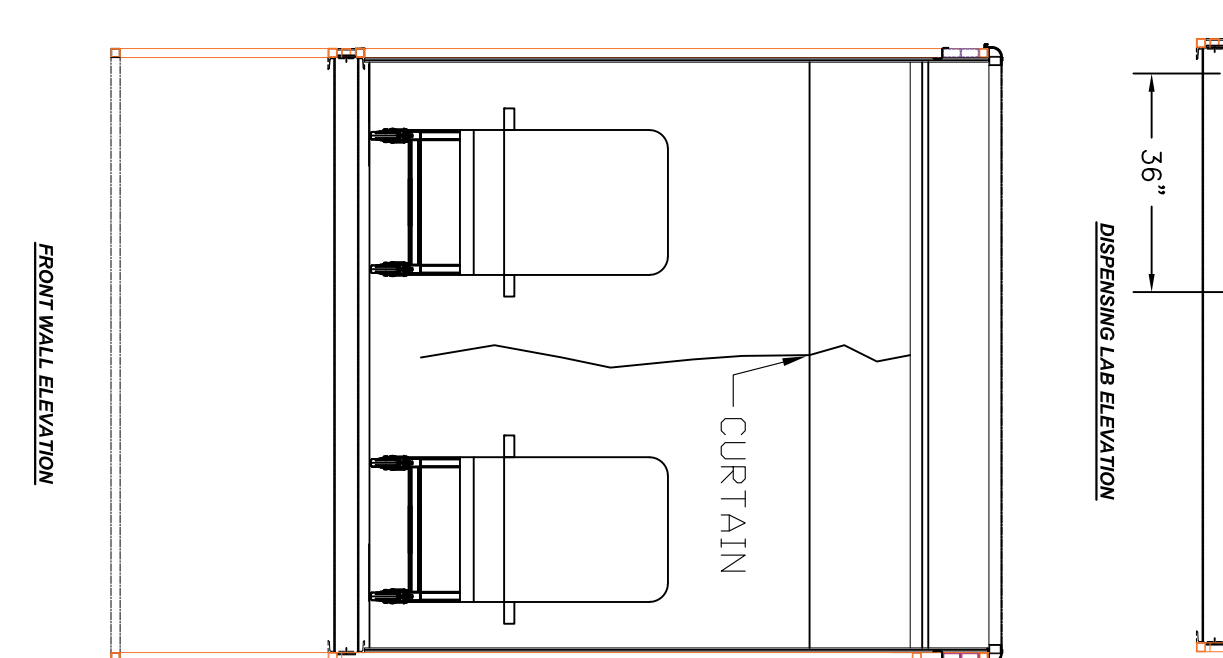
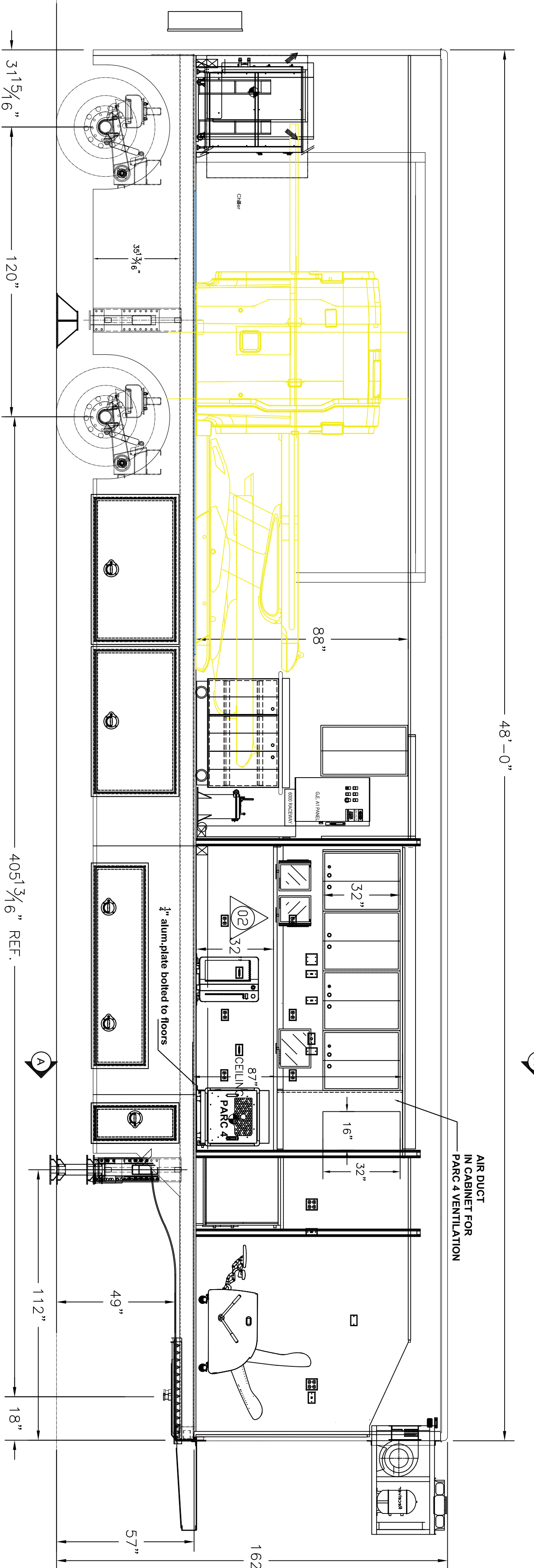
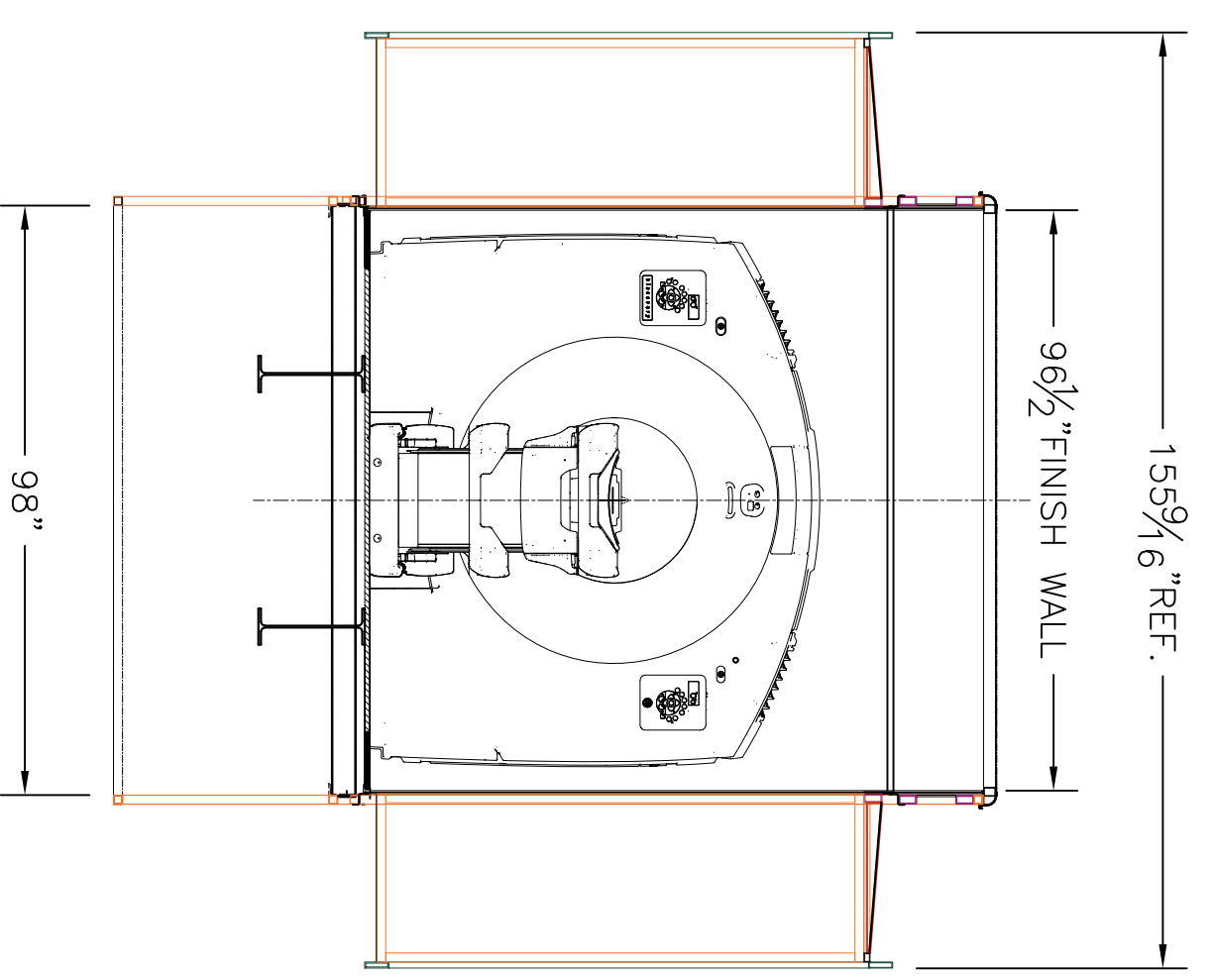
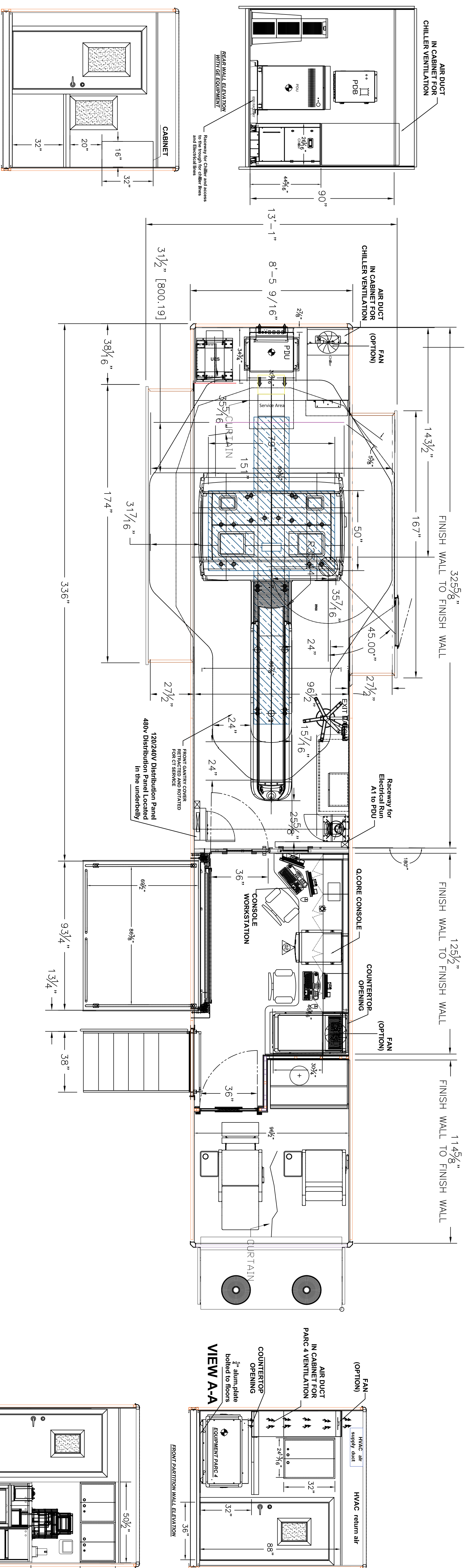


ITEM	QTY	PART NUMBER	DESCRIPTION
X	X	XXXX	XXXX

BILL OF MATERIALS



C.O.	REV.	DESCRIPTION	DATE	APPROVED
	00	STANDARD GENERAL LAYOUT 1ST VERSION	07/19/2021	[Signature]

NO.	DATE	BY	DESCRIPTION
01	07/19/2021	[Signature]	GENERAL LAYOUT

ADVANCED MOBILITY		9370 WEST EMERALD PARKWAY
by Kennedy Trailer		MONROE, IL, 60449
8'-6" x 13'-6" x 48'-0" TRAILER		PHONE: 815.328.2282
GE PET/CT Omni		WEBSITE: advanced.com
SCALE: 1/8" = 1'-0"	CHECKED BY: [Signature]	DRAWN BY: [Signature]
MATERIAL: AS NOTED	DRAWING NUMBER: 11644-A01	DATE: 07/19/2021
DO NOT SCALE	DRAWING NUMBER: 11644-A01	REV: 00

THIS DRAWING AND SPECIFICATIONS ARE THE PROPERTY OF ADVANCED MOBILITY & STRUCTURES TECHNOLOGIES. ARE ISSUED IN STRICT CONFIDENCE AND SHALL NOT BE REPRODUCED, COPIED OR USED AS THE BASIS FOR MANUFACTURE OR SALE OF MATTER DEPICTED HEREIN WITHOUT WRITTEN PERMISSION. IT IS CONSIDERED ON LOAN AND SHALL BE RETURNED TO ADVANCED MOBILITY & STRUCTURES TECHNOLOGIES UPON REQUEST.